



# TECHNOLOGY SOLUTION PROVIDER



# ABOUT US



ITIology Information Technology was established in the year 2015 in Dubai, UAE with a long term vision and focus to be a service provider of - Electronic Security Systems, Perimeter Protection Systems, Home Automation Systems, IT & Communication Systems, SMATV System & Structured Cabling works with a qualified, experienced & certified team.

We are an approved Security Systems Integrator by SIRA, Dubai and we offer complete turnkey low voltage system solutions which includes but not limited to - Design, Supply, Installation, Testing & Commissioning and Maintenance.



Juma Khalifa Al Nabooda is young, charismatic and influential business leader and as CEO, Juma has been directing Itiology on a strategic path of success. Being part of Khalifa Juma Al Nabooda Group, Juma has been involved in many companies of the Group and is in the process of creating his own Group - Juma Khalifa Al Nabooda Group.

Juma's key message to the Itiology team and to all businesses is to always be - CUSTOMER FOCUS and SATISFACTION. Unsatisfied Customers will always be a hindrance to the growth of any organization.

## VISION

TO BE A LEADING SERVICE PROVIDER & SYSTEM INTERGRATOR OF ELECTRONIC SECURITY, PERIMETER PROTECTION, HOME AUTOMATION, IT & COMMUNICATION, SMATV & STRUCTURED CABLING SYSTEMS



## MISSION

TO OFFER AND DELIVER RIGHT PRODUCTS & SOLUTIONS WHICH WILL MEET EXACT CUSTOMER REQUIREMENTS WITHIN BUDGET & TIMELINE WITHOUT COMPROMISING REGULATIONS



# INDUSTRIES WE CATER TO



COMMERCIAL



RESIDENTIAL



EDUCATION



GOVERNMENT



MANUFACTURING



HOSPITALITY



HEALTHCARE



MIXED USE DEVELOPMENTS



## PRODUCTS | SOLUTIONS | SERVICES

## ELECTRONIC SECURITY SYSTEMS

### HOME AUTOMATION SYSTEMS



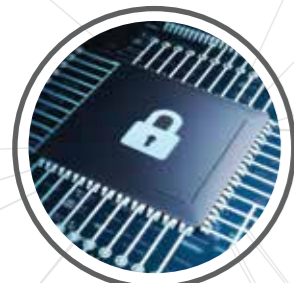
### PERIMETER PROTECTION SYSTEMS



### IT & COMMUNICATION SYSTEMS



### ELECTRONIC SECURITY SYSTEMS



### STRUCTURED CABLING SYSTEMS



### SMATV SYSTEMS



### VIDEO SURVEILLANCE / CCTV SYSTEM

Continuous monitoring is protecting given the increasing security threats in the modern world. Video Surveillance systems transforming the way how organizations, corporates, enterprises, institutions, property & facility managers are protecting their assets. We could offer wide range of complete video surveillance solutions which includes but not limited to Analog & IP Cameras, NVRs, DVRs and Video Management Software which will maximize the benefits of network video solutions through an integrated management platform whilst minimizing the complexity and will also meet the geographical standards and guidelines been set by authorities & regulators.



### ANPR (AUTOMATIC NUMBER-PLATE RECOGNITION) SYSTEM

Automatic Number Plate Recognition (ANPR) solution will be implemented with an intention to capture the number plates of vehicles getting into various secured premises and this solution can be applied to both low and high-speed applications. The ANPR software allows for the identification and capturing of number plate information via cameras and back end algorithms and get stored in secured internal databases.

#### Key Benefits

- Ensure maximum security.
- Deny unauthorized access.
- Ability to capture information regardless of speed or light conditions.
- High definition images for identification with event logs thus provides 24/7 access to users.



## ELECTRONIC SECURITY SYSTEMS

## ELECTRONIC SECURITY SYSTEMS



### ACCESS CONTROL SYSTEM

Access control systems are most commonly used to control entry into exterior doors of buildings and may also be used to control access into certain areas located within the interior of buildings. The purpose of an access control system is to provide quick, convenient access to those persons who are authorized, while at the same time, restricting access to unauthorized people.

#### Key Benefits

- Restricted access to premises.
- Complete transaction monitoring.
- No undetected strangers.
- Increase safety & ensure security.
- Reduce theft and accidents.
- Reduce chaos of after-hour shifts.



### TIME & ATTENDANCE MANGEMENT

Manual attendance marking and estimation leads to the expenditure of time and cost of the organizations. Human errors, buddy punching and fraudulent time keeping are additional hidden expenses which directly affects the productivity of any organizations. Variation in attendance policies from one company to another makes it extremely challenging to capture time-attendance data and automate them. Therefore, a fully automated time-attendance management software is paramount for enhancing productivity of any organization.

#### Key Benefits

- User-wise real-time monitoring & marking.
- Manage Multiple Shifts and Overnight Shift Effectively.
- Centralized Time-Attendance Management of Multiple Locations.
- Schedule Reports for ConvenAience.
- Accurate and Timely Salary Data for Payroll.



### INTRUSION DETECTION & ALARM SYSTEM

Intrusion Detection & Alarm is a system designed to detect intrusion - unauthorized entry - into a building or other area. Security alarms are used in residential, commercial, industrial, and military properties for protection against burglary (theft) or property damage, as well as personal protection against intruders. Intrusion alarm system consists of one or more sensors to detect intruders, and an alerting device to indicate the intrusion.

Some alarm systems serve a single purpose of burglary protection; combination systems provide both fire and intrusion protection. Intrusion alarm systems may also be combined with closed-circuit television surveillance (CCTV) systems to automatically record the activities of intruders, and may interface to access control systems for electrically locked doors. Systems range from small, self-contained noisemakers, to complicated, multiarea systems with computer monitoring and control.

It may even include two-way voice which allows communication between the panel and Monitoring station.

#### System components

- Alarm Control Panel
- Sensors
- Alerting devices
- Keypads
- Central Monitoring System

#### Key Benefits

- Constant Protection
- Strong Deterrent
- Uninterrupted Functionality
- Can Relocate
- Centralized Monitoring



## ELECTRONIC SECURITY SYSTEMS



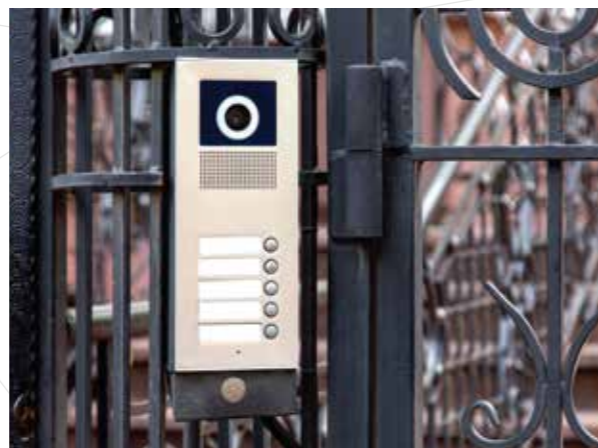
## PERIMETER PROTECTION SYSTEMS



### AUDIO & VIDEO INTERCOM SYSTEM

Audio & Video door-phone also known as Intercom is a stand-alone communication system used to manage calls made at the entrance to a building (residential complex, detached family home, workplace, etc.) with access controlled by audio-visual communication between the inside and outside.

Video door entry consists of both outside and indoor elements: an outdoor panel on the outside, an electronic lock release and an indoor monitor. The outdoor panel or street panel is installed beside the entrance door or gateway and incorporates different elements ready for use in any climate conditions: one or several pushbuttons to make the call (usually one per home or apartment), a micro camera adapted for night vision to capture the image of the caller, a microphone to pick up their voice and a



speaker to reproduce the voice of the occupant indoors. A video door entry panel may include push buttons to call the homes or offices and a camera to capture the street scene. The video entry monitor allows the occupant to see who has called, talk to the visitor and open the door.

#### Key Benefits

- Screen Visitors Before Allowing Access
- Ease of Communication
- Restrict Access to only Authorized Personnel
- Advanced Security
- Comfort and convenience
- Decrease in insurance premiums
- Easy to install and program
- Cost effective
- All-in-One access control solution



### FLAP BARRIERS

Flap barriers as the name reflects has retractable flaps which allows or denies the entrance of a person who is attempting to gain access to the premises. Flap barriers will be integrated with Access Control System to make sure authorized personnel's / only valid card holders are allowed inside the premises. It's a perfect way to ensure security in a place where there is a huge flow of people. Entrances like Zoo, Parks, Airports, Metro Stations, Corporate Offices, Banks are some of the common places where we can use Flap barriers.

#### Key Benefits

- Enhanced personnel security within the premises
- Authorized traffic inflow and outflow of people
- Reduce security breach & incidence by restricting the entry of unauthorized entrant



### BOOM BARRIERS

Boom barriers are ideal for perimeter protection. It is also known as a boom gate, a bar, or pole pivoted to allow the boom to block vehicular access through a controlled point. Its reliable mechanism and compact control unit designed to meet wide range of industrial, commercial and residential application. It provides secure and convenient solution for vehicle transits from / to restricted areas. Boom barriers can be integrated with any access control devices like parking system, toll systems, RFID and access readers.

#### Key Benefits

- Improved perimeter security
- Reliable & effective traffic flow & regulation
- Secure solution for vehicle movement



## PERIMETER PROTECTION SYSTEMS

## HOME AUTOMATION SYSTEMS



### METAL DETECTOR

Door Frame Metal Detectors (DFMD) / Walk Through Metal Detectors (WTMD) & Hand Held Metal Detectors (HHMD) are applied in situations from the inspection of visitors to that of inmates in top security check points, even in areas with strong electrical and mechanical interferences. Sophisticated threat detection & high passenger flow rates today require enhanced metal detection to ensure safety & security. These units are widely used in Airports, Hotels, Schools & Building Security, Loss prevention and Event Security.

#### Key Benefits

- High safety and high sensitivity
- Detection zone of it is quite wide
- Resist external interferences and avoid false alarms
- Count the number of people passed and the number of alarm precisely



### BOLLARDS

Bollards are metal structures used to restrict access, improve security, and landscape property. Typically bollards are used to protect pedestrians, buildings, industrial units, high security areas & arenas from vehicle attacks. There are many variants which includes Automatic Retractable Bollards, Removable Bollards, Fixed Bollards and Posts and the clients opt as per requirement. These bollards will meet the technical and aesthetic standards and security needs of clients and bollards can be integrated with Access Control Systems.

#### Key Benefits

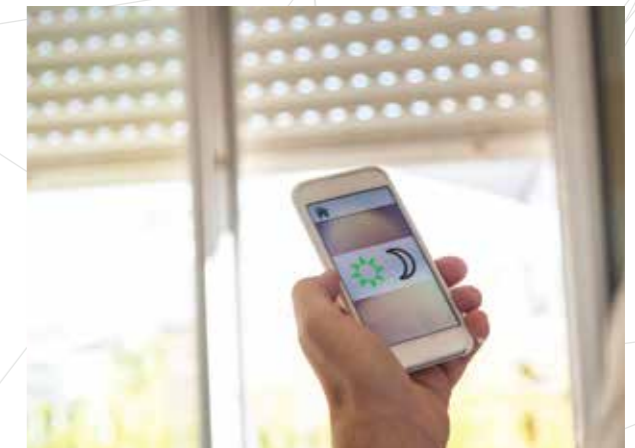
- Enhanced perimeter security
- Protect building and people from organized vehicle attacks
- Orderliness & cleanliness



### LIGHTING AND CURTAIN CONTROL

We offers the best control solutions for all kinds and sizes of motorized curtains, blinds, lighting equipment's which includes switching & dimming and connect them to the intelligent home network. Intelligent switches and remote controls can be used to control lights, the curtains and blinds in different ways, ranging from simple open/close and on/off commands to predefined settings stored in the system.

By integrating the curtain and blind control to the intelligent network it is possible to combine the control of light and air conditioning with the curtain



control and define various scenes and scenarios. When these scenes and scenarios are defined, users can recall them by pressing just one key on the remote control or the intelligent switch.

#### Key Benefits

- Intelligent management of energy consumption, which leads to savings
- Increasing the lifetime of the equipment's
- Adding comfort and ease of use



## HOME AUTOMATION SYSTEMS

## IT & COMMUNICATION SYSTEMS



### AIR CONDITIONING

Air-conditioning and cooling systems are vital part of every building in the Middle East. Different systems like fan coils, air handling units, heating, air conditioning and ventilation systems, chillers, split units, split ducts and so on, are being used to cope with the required specifications. Each of these systems needs to be controlled appropriately to save energy and provide the proper temperature conditions. Intelligent control systems are needed to apply the appropriate control to the system not only to use the energy optimally but also to provide the most comfortable environment.

#### Key Benefits

- Energy efficient
- Controllable comfort
- Reduces Humidity
- Improves air quality
- Silent operation
- Protects business critical equipment



### SMART DOOR LOCK

Smart locks that supplement or replace your front door deadbolt do much more than lock and unlock your door without a key. Smart locks let you receive alerts and track who's entering and leaving your residence; email limited-access digital "keys" to visitors, children, trusted service workers or guests when you're not at home; and remotely lock and unlock when you're away from home. Smart locks run on batteries and these batteries last between six months to a year, and flashing lights on the lock or a smartphone alert let you know if the batteries need replacing.

#### Key Benefits

- Increased convenience by replacing the keys
- No more lost, spare and forgotten keys
- Improved Security
- Heightened connectivity
- Remote monitoring and control through Apps.
- Electronically interlinked & integrated with Security Systems



### WI-FI ACCESS POINTS

In computer networking, a wireless access point (WAP), or more generally just access point (AP), is a networking hardware device that allows a Wi-Fi device to connect to a wired network. The AP usually connects to a router (via a wired network) as a standalone device, but it can also be an integral component of the router itself. An AP is differentiated from a hotspot, which is the physical location where Wi-Fi access to a WLAN is available.

#### Key Benefits

- Broader range of transmission
- More users access
- Flexible networking
- Multi-AP interconnection



### TELEPHONE SYSTEMS

PBX & PABX are most known telephone systems widely used by many organizations, enterprises & institutions. A private automatic branch exchange (PABX) is an automatic telephone switching system within a private enterprise. The users of the PBX can communicate internally (within their company) and externally (with the outside world), using different communication channels like Voice over IP, ISDN or analog.

#### A PABX also allows you to,

- Have more phones than physical phone lines Allows free calls between users
- It provides features like transfers, voicemail, call recording, interactive voice menus (IVRs) and call queues.



## IT & COMMUNICATION SYSTEMS



## SMATV SYSTEMS (SINGLE MASTER ANTENNA TELEVISION)



### SERVERS & DESKTOPS

Servers are often dedicated, meaning that they perform no other tasks besides their server tasks. Different servers do different jobs, from serving email and video to protecting internal networks and hosting Web sites. We could source genuine servers, desktops, laptops and other related IT accessories as per requirements at a competitive cost from reliable sources / product partners / manufactures.



### NETWORK COMPONENTS

Switches are primary backbone of any IT infrastructure irrespective of business segments. We could offer wide range of switches (Edge & Core), Fiber Optic Network Components & other networking accessories which will meet your technical requirements at attractive pricing. We do supply switches for the following verticals.

- Enterprise
- Small & Medium Businesses
- Industrial



### SMATV FOR HOTELS & MULTIDWELLINGS

SMATV is Single Master Antenna Television or Satellite Master Antenna Television. The purpose of SMATV is for supplying and controlling the number and type of channels to multiple televisions. Not only TV channels but FM channels as well.

It provides Reception of Direct Broadcast Satellite (DBS) TV/FM channels for hotels, motels, dormitories, hospitals and commercial properties with multiple tenants. Using a master antenna system video signals, audio signals and decoder signals can also be distributed. SMATV is primarily used in two business verticals namely Hospitality & Multidwellings.



#### Key Benefits

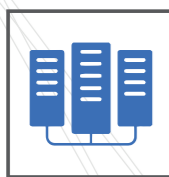
- One discrete headend - distribute satellite, digital terrestrial and radio signals from a single location
- A system to cover large areas without jeopardising signal and quality
- Tenants and landlords enjoy high quality and maximum flexibility
- Deliver Video On Demand, targeted information & offers





## STRUCTURED CABLING

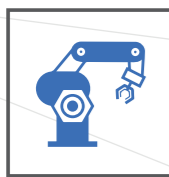
## ANNUAL MAINTENANCE CONTRACTS



Data centers



Offices - Small, Medium & Large Scale



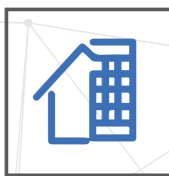
Manufacturing units and plants



Commercial developments



Residential apartments



Mixed use developments

Structured cabling system is a complete system of cabling and associated hardware, which provides a comprehensive telecommunications infrastructure that integrates voice, data and video services. This infrastructure serves a wide range of uses, such as to provide telephone service or transmit data through a computer network. Structured cabling design and installation is governed by a set of standards that specify wiring standards for various entities. We could offer complete SCS solutions which includes but not limited to the indicated verticals here with.

We further define a structured cabling system in terms of ownership. The structured cabling system begins at the point where the service provider (SP) terminates. This point is the point of demarcation (demarc) or Network Interface Device (NID). For example, in a telephone system installation, the SP furnishes one or more service lines (per customer requirements). The SP connects the service lines at the point of demarcation.

### Every structured cabling system is unique. This is due to variations in:

- The architectural structure of the building, which houses the cabling installation
- The cable and connection products
- The function of the cabling installation
- The types of equipment the cabling installation will support -- present and future
- The configuration of an already installed system (upgrades and retrofits)

There are many industry accepted institutions & governing bodies which are responsible or providing and maintaining standards and practices within the profession. It has published a series of standards to design, install, and maintain cabling installations to ensure a proper cabling installation.

### Key benefits of these standards include:

- Consistency of design and installation
- Conformance to physical and transmission line requirements
- A basis for examining a proposed system expansion and other changes maintaining uniformity

Our Annual Maintenance Services provide our clients with comprehensive support plans to address requirements of managing our client's - Extra Low Voltage Systems, IT infrastructure and other structural backbone systems installed in the premises. Moreover, our services are fully customizable - and we can create a support plan just as required by our clients. We could offer Comprehensive & Non-Comprehensive maintenance contracts based on systems aging, wear & tear factors.

Our several years of expertise in providing support services helps us deliver SLA based Annual Maintenance Services for Electronics Security Systems, Physical Security Systems, Home Automation Systems, Desktops, Laptops, Server systems, Storage systems, Networking products and other peripherals - regardless of your OEM brand. What's more, we are an authorized and approved security systems service provider by "Security Industry Regulation Authority (SIRA), Dubai". We will meet the highest service standards dictated by SIRA through strong commitment to customer satisfaction and continuous improvement.

### Our Maintenance Services include:

- CCTV / Video Surveillance System
- Access Control System
- Time & Attendance Management System
- Audio & Video Intercom
- Physical Security Systems
- Smart Home Automation Systems
- Lighting & Curtain Control Systems
- Air Conditioning Monitoring & Control Systems for Villas
- SMATV System
- IT & Communication Infrastructure

### Key Benefits

- AMC services saves from unexpected maintenance and repair cost
- Clients can avail the systematically & timely executed annual maintenance contract services that also renders rounds the clock maintenance & repair from qualified technicians and support staff.
- Provides the clients with effective advantages of planning of the maintenance and repair services at regular intervals of time which will increase the efficiency of the products.
- Enables the clients with only the genuine spare parts for better performance and durability.

## OUR CLIENTS



ABELA&CO



Home Bakery



Bujsaim Group





جامعة خليفة النابودة  
Juma Khalifa Al Nabooda



Office 104, 1st Floor, Khalifa Juma Al Nabooda Building  
P.O.Box 126695, Sheikh Zayed Road,  
Dubai - UAE  
☎ : +971 4 349 0799  
✉ : info@itiology.ae



itiologyitllc



itiologyit



itiology



itiologyit